



## What to do... GlobalFax Won't Load at Startup

### **Introduction:**

This document provides information about what to do if your GlobalFax software will not properly load at startup. If you get the error message “-2012” or “-43,” download document #2027, “What to do... Mac Reports Error -2012 or -43 at Startup.” If you have a PowerPort Mercury for 500 or Duo modem, and get the error message ending “...could not load because this is not a PowerBook family Macintosh,” download document #2523, “What to do... Mac Reports ‘Not a PowerBook Family Macintosh Error.’” For all other error messages related to GlobalFax not being able to load at startup, use this document.

If GlobalFax could not load at startup, then follow the troubleshooting steps below.

### **Isolating System Software and GlobalFax**

By isolating to just Global Village software and your Apple System Software, you are eliminating any “3rd party software components” that might be causing GlobalFax to not load at startup.

1. Click on your **Apple** menu, choose **Control Panels** and select **Extensions Manager**.
2. OS 7.5.x Users: Click on the **Sets** pop-up menu and choose **System 7.5 only** or **System 7.5.x**.  
  
OS 7.6 or later Users: Click on the **Selected Set** pop-up menu and choose **Mac OS (your OS version) All**. Click the **Duplicate Set** button at the bottom right, name your new set **Global Village + Apple only**, and click **OK**.
3. Use the following table to find your product family and version of GlobalFax. Once you've located your product family/GlobalFax version, enable the appropriate Global Village extensions and control panels (System Components) in the Extensions Manager.

**NOTE:** All of the appropriate components may not show up in your Extensions Manager if you're using a version of Extensions Manager prior to 7.6. Components that are not visible will be automatically enabled.

### TelePorts

GlobalFax Version	Control Panel	Extensions
2.08 - 2.1.3	TelePort Serial	GlobalFax
2.1.4 - 2.5.x	TelePort	Global Village Toolbox, GlobalFax
2.6.x	TelePort	Global Village Toolbox, GlobalFax, GV Address Book Engine, GV Modem Phone Tool (Speakerphone only), GV Phone Engine (Speakerphone only), Telephone Manager Extension (Speakerphone only)

### PowerPort 1xx Series (Internal modem for PowerBook 100-180)

GlobalFax Version	Control Panel	Extensions
2.08	PowerPort	GlobalFax
2.5.x	PowerPort	Global Village Toolbox, GlobalFax

### PowerPort 5xx Series (Internal modem for PowerBook 520 and 540)

GlobalFax Version	Control Panel	Extensions
2.08	PowerPort	GlobalFax, PowerPort 500 Tool
2.5.x	PowerPort	Global Village Toolbox, GlobalFax, PowerPort Tool for 500 & Duo

### PowerPort Duo Series (Internal modem for PowerBook Duos)

GlobalFax Version	Control Panel	Extensions
2.08	PowerPort	GlobalFax, PowerPort Duo Tool
2.5.x	PowerPort	Global Village Toolbox, GlobalFax, PowerPort Tool for 500 & Duo

### PowerPort PC Cards (14.4 and 28.8)

GlobalFax Version	Control Panel	Extensions
2.5.7 - 2.5.8	PowerPort PC Card	Global Village Toolbox, GlobalFax
3.0.2 - 3.0.4	Global Village PC Card	Global Village Toolbox, GlobalFax GV Gold Enabler (Gold cards only) GV Int Platinum Enabler (Int'l. Plat. cards only) GV PC Card Ethernet (Pro cards only) GV Platinum Enabler (Platinum cards only) GV Platinum Pro Enabler (Pro cards only)

### Global Village 56K PC Cards

GlobalFax Version	Control Panel	Extensions
2.5.9	Global Village PC Card	Global Village Toolbox, GlobalFax, GV Address Book Engine
3.0.2 - 3.0.4	Global Village PC Card	Global Village Toolbox, GlobalFax, GV Address Book Engine, GV 56K Combo Enabler (Combo cards only), GV 56K PC Card Enabler, GV 56K PC Card Enabler 2

4. Close the Extensions Manager.
5. Restart your computer. After restarting, the only software that will be enabled is Global Village and Apple System Software.
6. If GlobalFax still doesn't load at startup, then you may have corrupted GlobalFax software or System Software. Skip to the section of this document titled **Clean Installing GlobalFax**. If GlobalFax can load at startup, you will need to determine which 3rd party system component(s) caused the problem. Reopen the **Extensions Manager**, enable a few items at a time and restart your computer. If GlobalFax can still load at startup again, then you can continue the process of using your Extensions Manager to add more items to the system software set that you're using, until you eventually find which system component(s) caused the original issue to reappear. Once you've determined this, reinstall the system component(s) using your floppies/CD, or call your software manufacturer for assistance.

### Clean Installing GlobalFax

None of the steps in the following process will remove your address books, fax log or your saved, spooled, or scheduled faxes. However, you will need to enter in your Dialing and Sending Setup information again once the steps are completed since this information is removed when you clean install GlobalFax.

NOTE: If your Global Village software came on CD-ROM, and you use a non-Apple CD-ROM drive, you will need to verify that the appropriate (non-Apple) system components needed to use your CD-ROM drive are also enabled in the Extensions Manager. If you need assistance with this operation, please contact the manufacturer of your CD-ROM drive.

1. Open your hard drive.
2. Open your **System Folder**.
3. GlobalFax 2.08 - 2.5.9 users: Open your **GlobalFax Personal** folder  
  
GlobalFax 2.6.x users: Open your **GlobalFax Personal** folder, located in your **Global Village** folder inside the **Preferences** folder.
4. Move the **GlobalFax Preferences** and **Queue Temp** files into the **Trash**. Do not empty the Trash yet.
5. Insert your GlobalFax Installation Disk (1) or CD-ROM into your Macintosh.
6. Double-click the **Installer** icon. An introductory window will appear.
7. Click **Continue**. The Installer dialog window will appear.
8. Click on the pop-up menu in the upper left hand corner of the Installer dialog window and select **Custom Remove**.  
*See Figure 1.* Check the box that says **GlobalFax Software for...(your modem type)** in the Custom Remove window.
9. Click the **Remove** button in the lower right hand corner of the Installer dialog window.

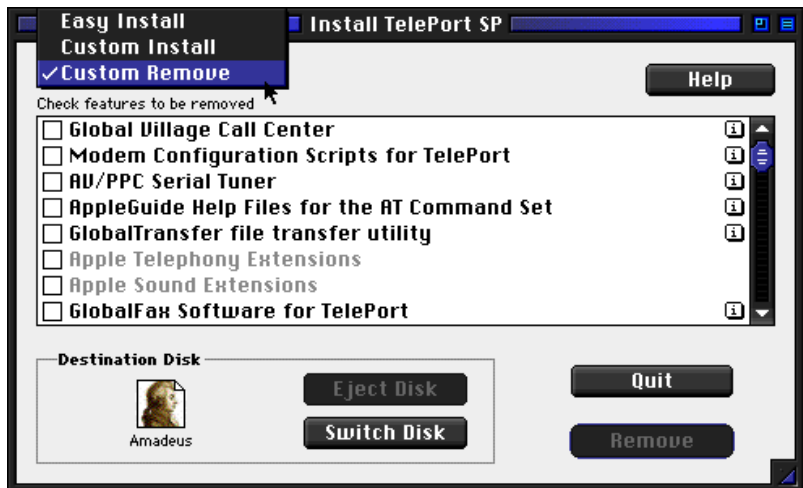


Figure 1

NOTE: For GlobalFax 2.08 users, click on the **Customize** button, and choose **GlobalFax™ Software** from the left. Hold down the **Option** key and click on the **Remove** button.

10. Once the removal process is completed, a dialog box will appear confirming that the removal was successful and will ask you to restart your computer. Click **Restart**.

11. Insert your GlobalFax Installation Disk (1) or CD-ROM into your Macintosh.
12. Double-click the **Installer** icon. An introductory window will appear.
13. Click **Continue**. The Installer dialog window will appear.
14. Click on the pop-up menu in the upper left hand corner of the Installer dialog window and select **Custom Install**. Check the box that says **GlobalFax Software for...(your modem type)** in the Custom Install window.
15. Click **Install** to install the software on your hard disk. If a dialog box appears asking whether or not you'd like to keep a Newer or Older Chooser, choose **Newer**.

NOTE: For GlobalFax 2.08 users, click on the Customize button, choose **GlobalFax™ Software** from the left and click on the **Install** button.

16. Once the installation process is completed, a dialog box will appear confirming that the installation was successful and will ask you to restart your computer. Click **Restart**.
17. If your modem is correctly connected to your computer's modem port and powered on, you should see the Global Village registration screen after a few moments. If you have previously registered and do not want to be prompted for registration information, click on the **File** menu and choose **Quit**. When prompted with when you would like to eventually register, choose **Never** or **Quit** (whichever is available depending on your version of GlobalFax).

For additional information on installing GlobalFax, please reference "Installing GlobalFax Software" in the Table of Contents of your Getting Started Guide.

18. Empty the **Trash**.
19. If GlobalFax still doesn't load at startup, then you most likely have corrupted System Software, and we recommend you contact the manufacturer of your Macintosh (i.e. Apple) for technical assistance. If GlobalFax can load at startup, you may want to determine if one or more (non-Global Village) 3rd party system component(s) caused GlobalFax to become corrupt. Reopen the **Extensions Manager**, turn on a few items at a time and restart your computer. If GlobalFax can still load at startup, then you can continue the process of using your Extensions Manager to add more items to the system software set that you're using, until all the system components are enabled. You may eventually find one or more system component(s) that caused the original issue to reappear. Once you've determined this, reinstall the system component(s) using your floppies/CD, or call your software manufacturer for assistance.